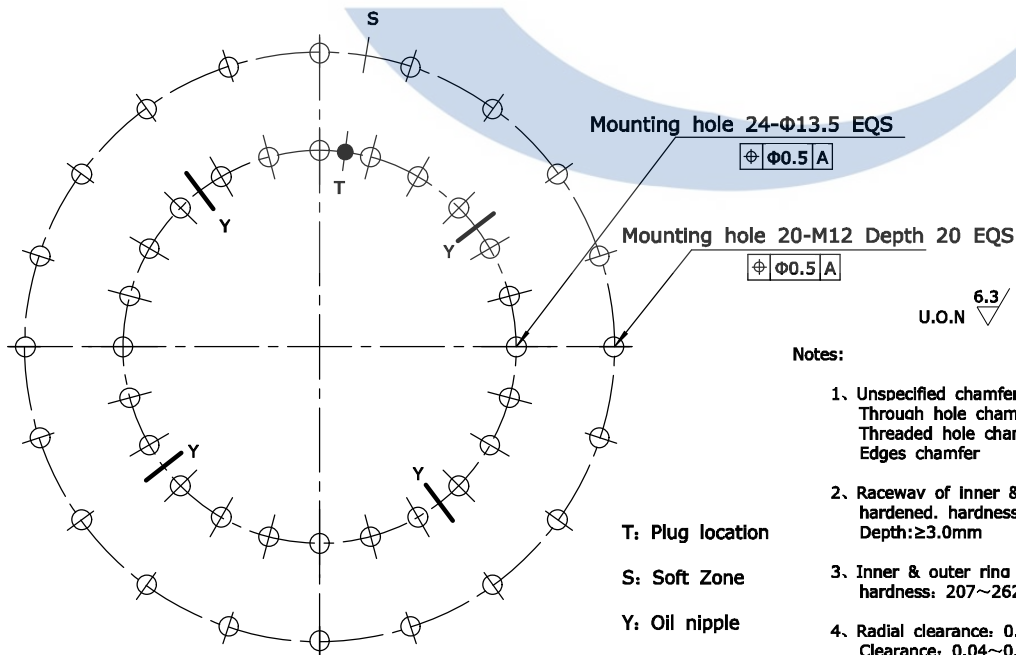
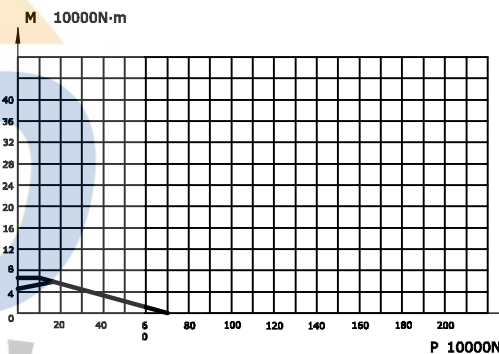
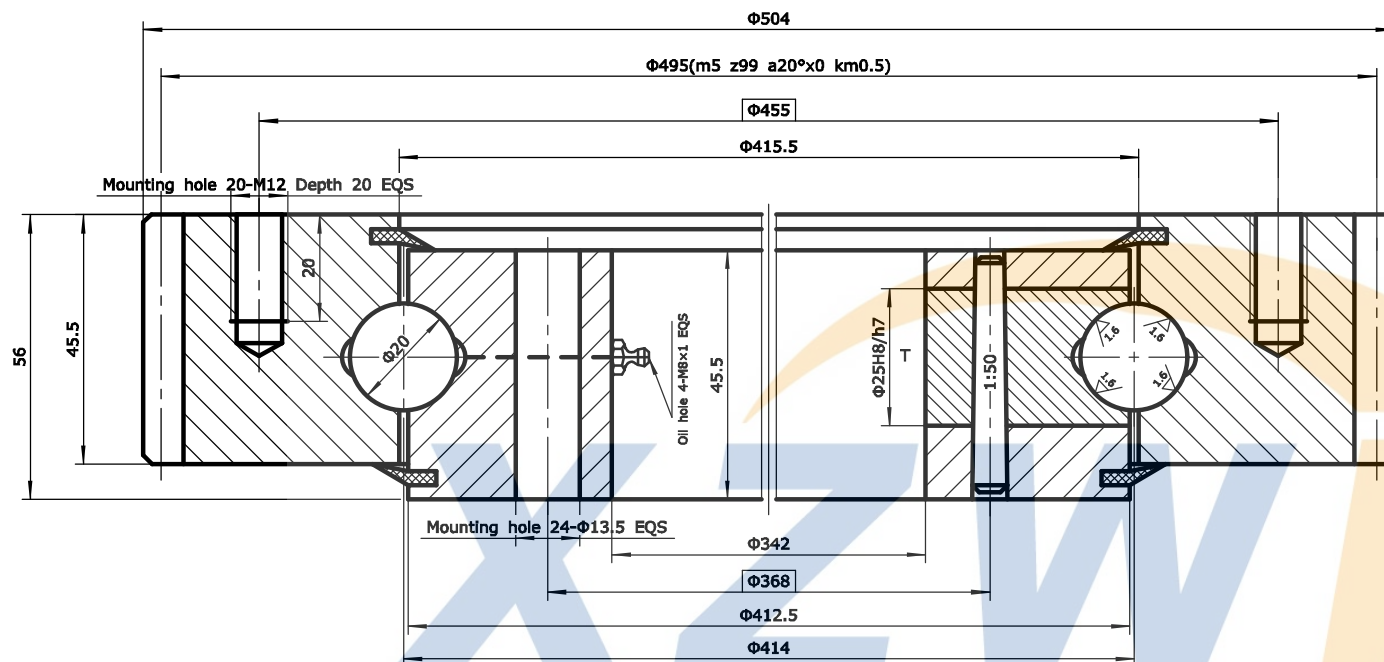


| | | |
|---|----------|--|
| Module | m | 5 |
| Teeth no. | z | 99 |
| Teeth pressure angle | α | 20° |
| Modification coefficients | x | 0 |
| Reduction coefficients | km | 0.5 |
| Precision(GB10095-88) | | 10 |
| Average base tangent length and deviation | W | 176.68 ^{-0.35} _{-0.49} |
| Spanned tooth count. | k | 12 |
| Base tangent length change tolerances | FW | 0.13 |



Notes:


1. Unspecified chamfer: 1.0×45°
Through hole chamfer: 1.0×45°
Threaded hole chamfer: 2.0×45°
Edges chamfer
2. Raceway of Inner & outer ring Induction hardened. hardness: 55~62HRC
Depth: ≥3.0mm
3. Inner & outer ring quenched & tempered, hardness: 207~262HB
4. Radial clearance: 0.04~0.20 mm
Clearance: 0.04~0.20 mm

T: Plug location

S: Soft Zone

Y: Oil nipple

U.O.N ∇ 6.3

| No. | Standard | Component | Material | Model | Qty | Remark |
|---------|------------|------------|---|-----------------|--------------|--------------|
| 08 | HG/T2811 | Seals | NBRI-3 | W17 | 2 | |
| 07 | GB117-76 | Pin | CN45 | Φ8×40 | 1 | |
| 06 | | Plug | CN45 | Φ25 | 1 | |
| 05 | JB/T7940.7 | Oil nipple | Component | M8×1 | 4 | |
| 04 | GB/T699 | Inner ring | 50Mn | | 1 | |
| 03 | GB/T308 | Ball | GCr15 | 19.844 | 53±1 | |
| 02 | HG/T2349 | Spacer | Nylon | D20 | 53±1 | |
| 01 | GB/T699 | Outer ring | 50Mn | | 1 | |
| | | | | | | |
| | | | Model | WD-061.20.0414 | Drawing | Weight 31kg |
| | | | Name | Slewing Bearing | Qty | Scale |
| | | | Material | 50Mn | Total 1 page | the 1st page |
| Design | Standard | |  XUZHOU WANDA SLEWING BEARING CO.,LTD Tel: +86 516 83309366 Fax: +86 516 83915766 http://www.slew-bearing.com | | | |
| Check | | | | | | |
| Process | Approve | | | | | |
| Date | | | | | | |